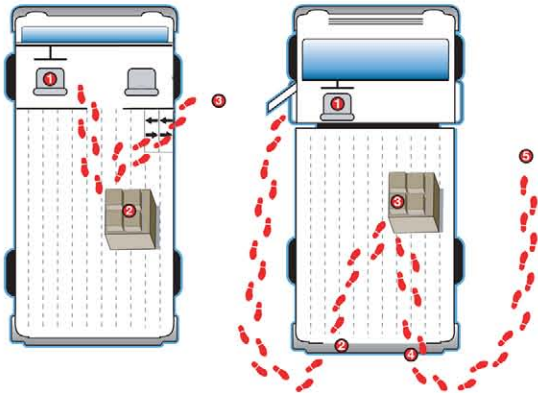




The **UDV** (*Ultimate Delivery Vehicle*)

INTELLIGENT DESIGN ADVANTAGES



The **UDV** ADVANTAGE

a Conventional Delivery Van

40%
improvement

in delivery times over conventional delivery methods...
See the video time study at www.morganolson.com
 PLUS the UDV is safer for drivers...
 Imagine never having to step into traffic again...the UDV
 provides drivers that kind of safety by design.

Morgan Olson's legacy of building the most durable and safest
 Walk-In vans now comes in a smaller package...the UDV is
 a great fit for smaller routes wanting increased fuel efficiency.



DIMENSIONS:

Wheelbase	170"	Body Length	15' 6"
Load Length	187"	Load Height	85"
Load Width	92"	Overall Width	96"
Overall Height	126"	Floor Height	39"
Rear Step	21"	Approx Payload	4,000lbs
Cargo Space	851 ft ³		



1801 South Nottawa Street
 Sturgis Michigan 49091
 1.800.321.3758 sales@morganolson.com

The **UDV**

(Ultimate Delivery Vehicle)



Your Choice of Chassis

Mercedes-Benz



SUGGESTED INDEPENDANT CONTRACTOR UDV PACKAGE DELIVERY BODY OPTIONS:

- 36" curbside cargo door slider opening
- 20" deep, fold-up adjustable shelving
- High security Lock on rear roll-up door
- Fire Extinguisher & Safety Triangle kit

- 15' 10" usable cargo length
- Flip-down step well cover (maximize cargo area)
- Back Up camera system
- Rear cargo safety handles



SAFETY TREAD CURBSIDE ACCESS

Drivers Safety is a serious concern for everyone. The UDV provides drivers safe passage and avoids the dangers of stepping into oncoming traffic with Morgan Olson's UDV design.



IMPROVE YOUR DELIVERY EFFICIENCIES

**CAB to CARGO with
CARGO to CURBSIDE**

1.800.321.3758

www.morganolson.com
sales@morganolson.com

This FXG cargo area features our durable all-aluminum floor with reinforced 3/8" plywood featuring Morgan Olson's patented infinitely adjustable sidewall shelving stiffeners. Custom cargo configurations available.