



MT45 MT55

THE ROUTE STAR Walk-In Van



MORGAN OLSON
HOME OF THE WALK-IN VAN



Full Translucent Roof



Twin Skylight Roof



Center Skylight Roof

STANDARD FEATURES

- Durable, long-lasting, aluminum body
- Extruded aluminum floor w/ 10" wheel boxes
- Lift-up aluminum hood
- LED clearance and marker lights
- Interior sliding cab doors
- Sliding sash windows on R/L doors
- High-back cloth driver seat with lumbar support
- 48,000 BTU heater/defroster with recirculation function
- 8" deep steel bumper with diamond plate surface
- Exterior dual head mirrors
- Cab and (1) cargo dome light with switch on dash
- Incandescent lights recessed in kick plate
- Halogen headlights
- Mud flaps
- Twin 19" rear swing doors
- Solid aluminum roof
- Body undercoating
- Single stage exterior white paint

AVAILABLE OPTIONS

- Cab Air Conditioning
- AM/FM radio
- Safe-Driver Cockpit Console with touch screen
- Aluminum bulkhead with Center sliding door
- Door-less driver
- 12v power source on dash
- Jump Seat (removable or bulkhead mounted)
- Additional passenger seat options
- Power and manual roof vents
- Additional Cab and Cargo dome lights
- Exterior LED stop, turn and back-up lights
- E track on cargo area walls
- Safety Tread for cargo, cab and steps
- Acoustical Floor Matting
- Sound deadening carpet
- various rear bumpers styles & choices
- Ramps & Liftgates
- Back-up Cameras * sensing devices

WALK-IN VAN CUSTOMERS

- Delivery Companies
- Baking & Snack Food
- Textile Rental / Laundry Services
- Public Utilities & Municipalities
- Newspaper Companies
- Contractors & Plumbers
- Schools & Universities
- Ice Cream & Food Trucks
- Police & Fire Departments
- Soft Water Conditioning
- Exterminators
- Parts / Tool Suppliers
- Vending & Coffee Services
- Nurseries & Landscaping
- Catering and many more!



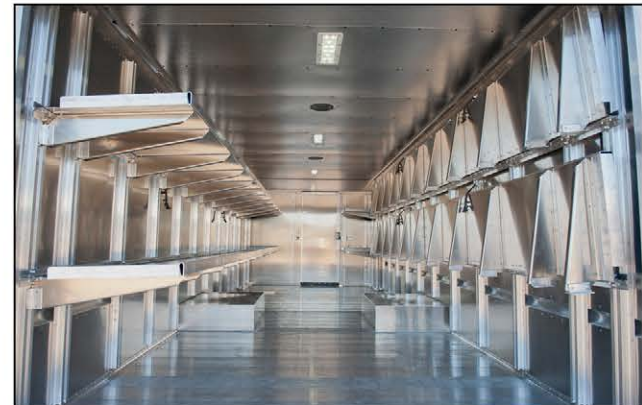
Safety Tread & Safety Entrance Handrail with 3-tier bookcase style shelving



Safety non-slip floor with Twin Uniform Hangers and convenient 4-tier storage shelves ML004, Rev 20B



Folding Aluminum Shelves with Adjustable Stiffeners



Our Most Popular Package Delivery Folding Shelves Option

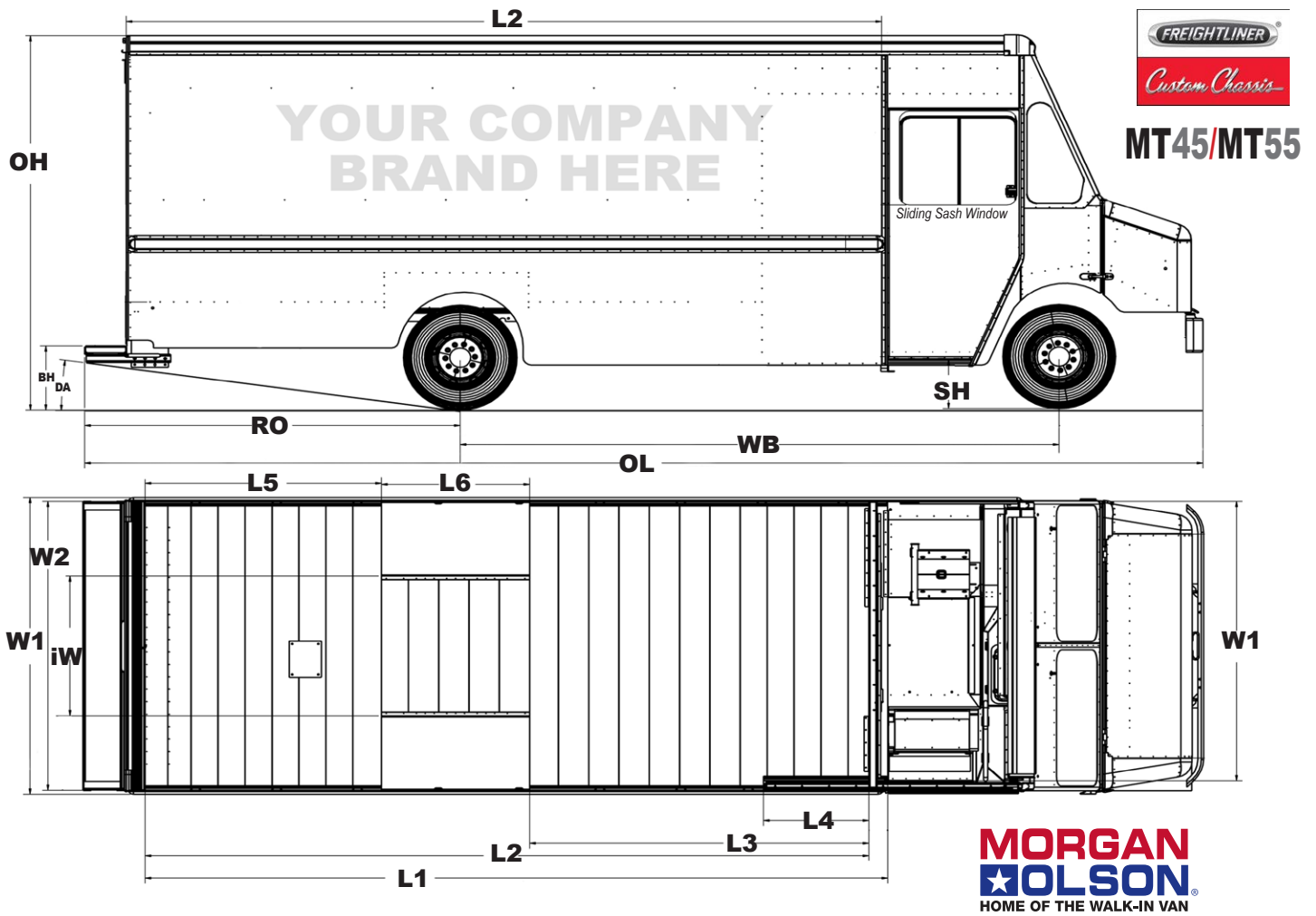


Storage Bins with E-Track



Optional Lift Gate and Ramps

Additional Information
WWW.MORGANOLSON.COM



The **FCCC MT45 MT55 / Morgan Olson Route Star** Walk-In Van Chassis / Body Specs

Chassis		MT45	MT45 (GVWR 14,140 - 19,500 lbs) / MT55 (GVWR 20,500 - 30,000 lbs)									
Wheelbase	WB	138"	158"		178"		190"		208"		218"	
Body Length		12'	14'	15'	15'4"	16'	18'	18'	20'	20'	20'	22'
Cargo Capacity (cubic ft.)*		548	727	783	802	838	948	948	1058	1058	1058	1163
Overall Length**	OL	273"	285"	297"	301"	309"	333"	333"	357"	357"	357"	369"
Overall Cargo Length	L1	148.5"	172.5"	184.5"	188.5"	196.5"	220.5"	220.5"	244.5"	244.5"	244.5"	268.5"
Cargo Length (behind bulkhead)	L2	143"	167"	179"	183"	191"	215"	215"	239"	239"	239"	263"
Bulkhead to Wheelbox Length	L3	60.5"	80.5"	80.5"	80.5"	100.5"	100.5"	112.5"	112.5"	130.5"	140.5"	140.5"
Bulkhead to rear of Door Pocket	L4	32"	32"	32"	32"	32"	32"	32"	32"	32"	32"	32"
Back of Wheelbox to Rear of Floor	L5	38.5"	42.5"	54.5"	58.5"	46.5"	70.5"	58.5"	82.5"	64.5"	54.5"	78.5"
Wheelbox Length	L6	44"	44"	44"	44"	44"	44"	44"	44"	44"	44"	44"
Overall Width	W1	95" (both gas & diesel chassis)										
Interior Width	W2	93" (both gas & diesel chassis) with 41" aisle width (iW)										
Overall Height**	OH	116-120" (81" interior height) / 120-124" (85" interior height)										
Departure Angle (w/ 12" grated bumper)	DA	12.25°	13.25°	11.75°	11.25°	12.75°	10.12°	11.25°	9.25°	10.62°	11.75°	10.5°
Rear Overhang (w/ 12" grated bumper)	RO	92"	84"	96"	100"	88"	112"	100"	124"	106"	96"	108"
Rear Bumper Height	BH	18-22"										
Side Step Height	SH	16-19"										

Please contact Morgan Olson Sales for exact body dimensional data

* Usable Cargo Area reflects adjustment for wheelbox and door pocket space ** Dimensions may vary with additional chassis & body options and/or from model year to model year